



# 水稻抗赤霉病基因簇的克隆与定位

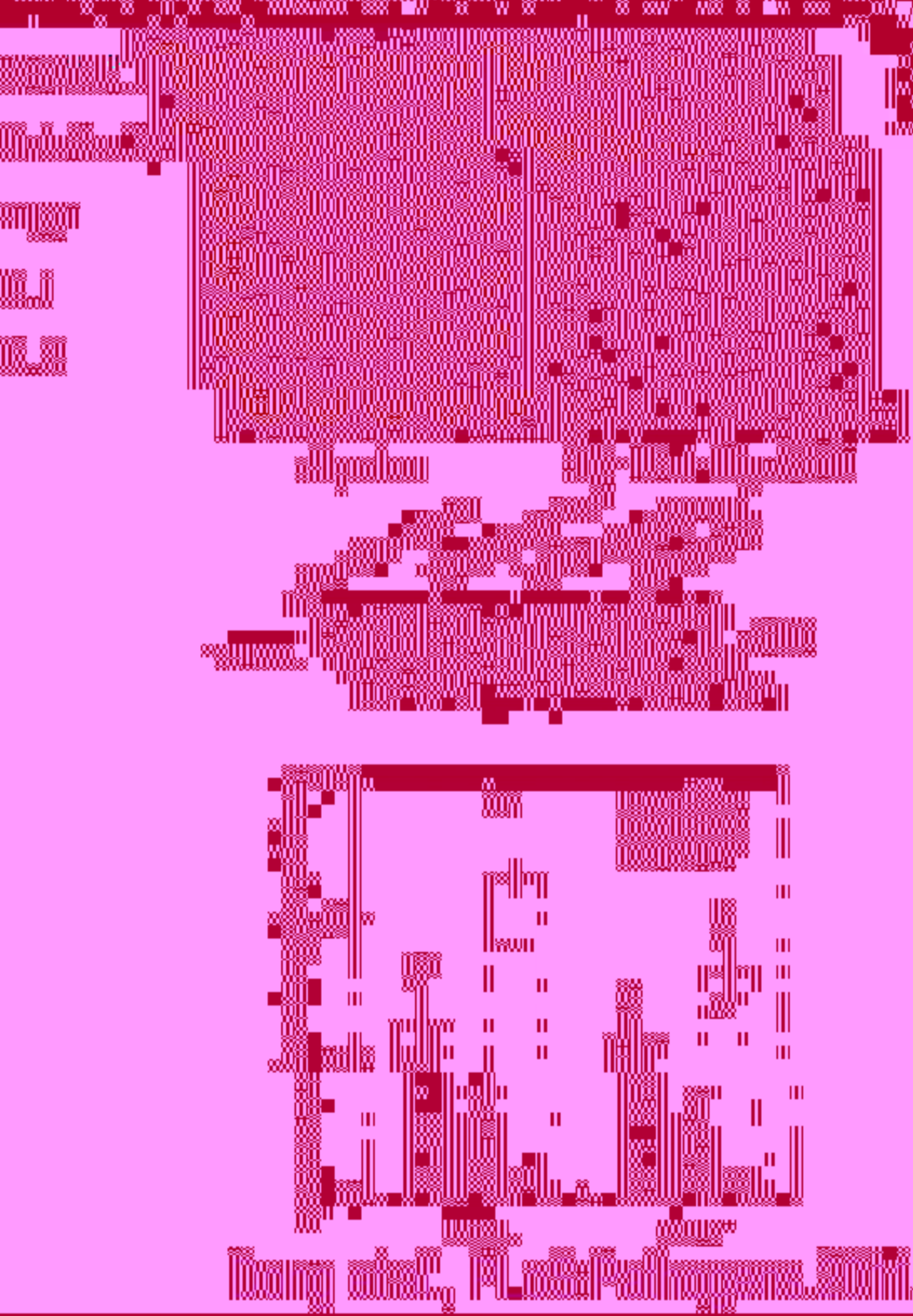
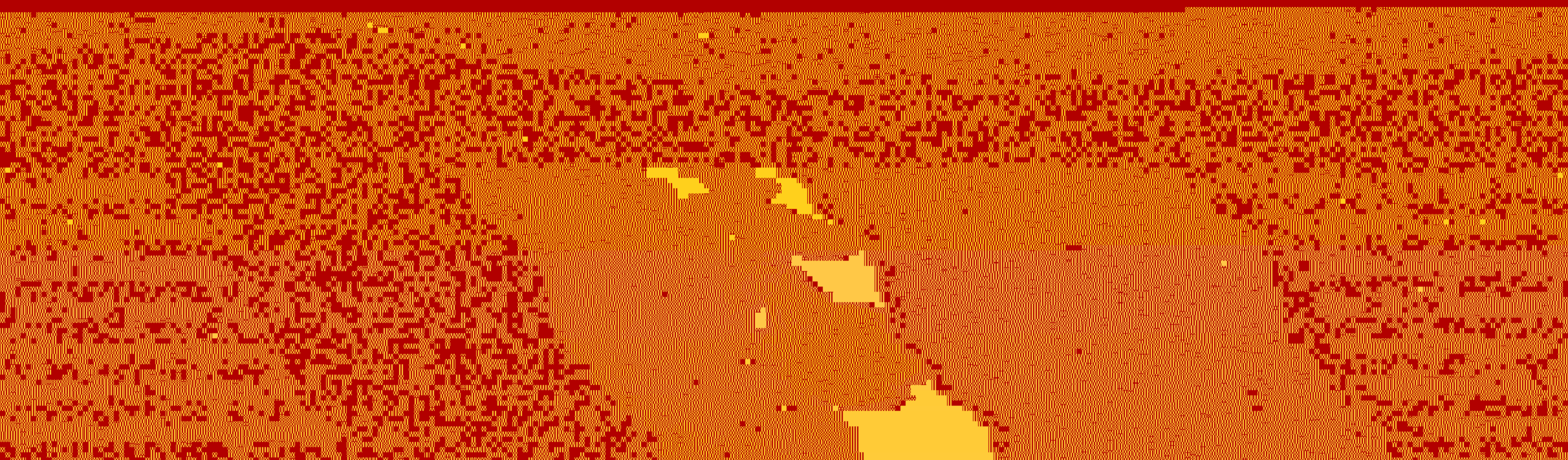


Figure 1: Genetic map of the rice genome showing the location of the Fusarium head blight resistance gene cluster on chromosome 11.



Figure 2: Schematic diagram of the rice genome showing the location of the Fusarium head blight resistance gene cluster on chromosome 11.



Figure 3: Genetic map of the rice genome showing the location of the Fusarium head blight resistance gene cluster on chromosome 11.



Figure 4: Schematic diagram of the rice genome showing the location of the Fusarium head blight resistance gene cluster on chromosome 11.